

## Customer Success Case



### Business Intelligence

#### The Complete BI Solution for Public Administration

**AIRC - Market Leaders in Software Development for Portuguese Public Administration.**

AIRC is a non-financial public enterprise unit founded by 30 municipalities in the central Portuguese region. With over 30 years of experience, AIRC's main activity is to develop software and deliver products and services targeted to the Local Public Administration.

website: [www.airc.pt](http://www.airc.pt)

#### Key Benefits:

- Business Expansion: Extending AIRC Portfolio;
- Delivery of BI Solutions with Costs Reduction;
- Time-to-Market: Open & Flexible Platform;
- Reduced Total Cost of Ownership (TCO);
- Solution aligned with OSS Strategy in the Portuguese Public Administration.

#### CHALLENGE

In times of economic crisis and scarce resources, it is necessary to ensure that all business managers use the best practices to promote efficiency and reduce costs. As a leader in software development for Portuguese Public Administration, AIRC's main challenge was to build a Business Intelligence solution able to meet new business goals in the Municipalities and local government institutions. For AIRC, it was mandatory to identify a technical solution that was easier to maintain, quicker to develop, more scalable than proprietary BI and with a significant cost reduction. This BI solution was named "BIAIRC".

With a large experience in Business Intelligence & Big Data, Xpand IT was selected to help AIRC to integrate the best features of open source technologies into BIAIRC, to provide a complete & scalable BI Platform for Portuguese Public Administration.

#### SOLUTION

#### The Complete Platform for Data Integration & Business Analytics

Open source solutions are starting in a mature cycle, meaning that corporate customers are discussing why and how should they deploy OSS in their critical systems.



#### Why Pentaho Business Analytics?

- › Modern and embeddable software platform to access visualize and analyse data;
- › Ability to quickly analyze large volumes of historical Data;
- › ETL capabilities to migrate customer data into its data warehouse;
- › Flexible, customizable reporting with hprofessional & appealing interface design;
- › Costs Efficiency - Commercial Open Source Software Licensing Model;

#### Pentaho Suite & Community Tools

Pentaho BI Server, Pentaho Data Integration, Pentaho Workbench, Pentaho FusionCharts Plugin, Community Dashboard Framework (CDF), Community Data Access (CDA) and Bootstrap CSS from Twitter.

#### BI Dashboards:

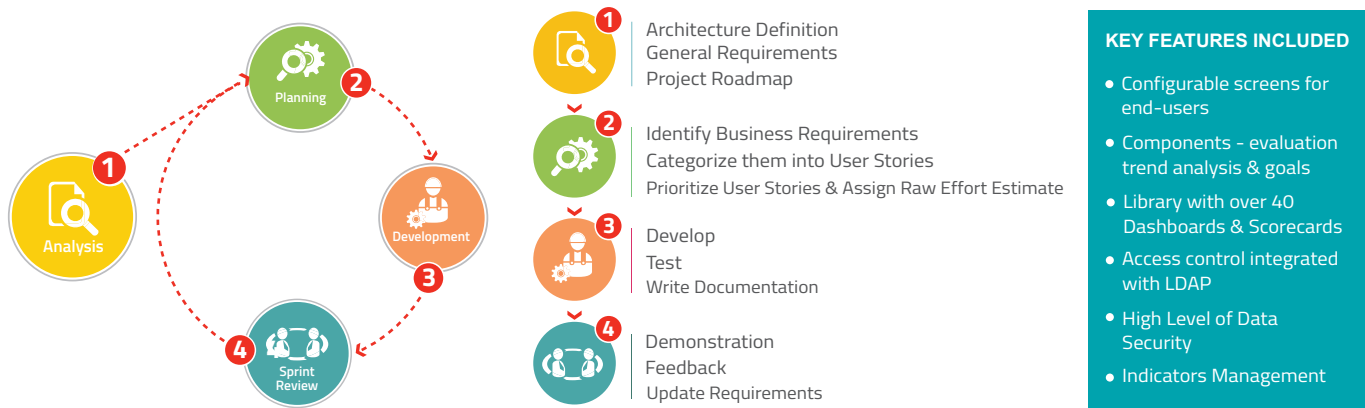


“ Pentaho BI turned out to be the ideal platform for our BIAIRC Product, providing services like data integration & data analytics. Xpand IT demonstrated a profound technical knowledge and really supported our efforts to deliver an offer more agile, scalable and cost-efficient solution.”

*Ricardo Riquito - Sales & Marketing Director, AIRC*

# XPAND IT AGILE METHODOLOGY

This successful project was planned and implemented using agile methodologies mapped and certified with CMMI to reduce development cycles, provide agile management and achieve quick results.



## RESULTS

Having decided to launch a new and unique BI SaaS, Xpand IT help AIRC to find the complete list of open source vendors to provide the most comprehensive products and services for their needs. The result was the solution - Biairc

**KEY FEATURES**

- Amazing Dashboards
- Trend Analysis Capability
- Multiscreen visualization
- Indicator Management
- Data Security

**TIME TO MARKET**

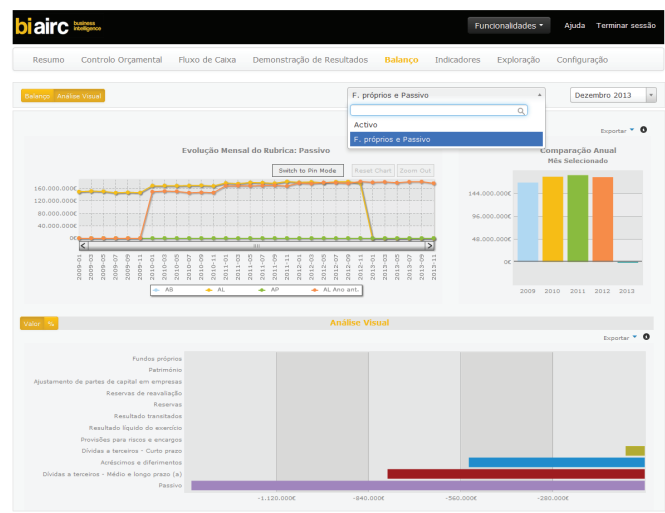
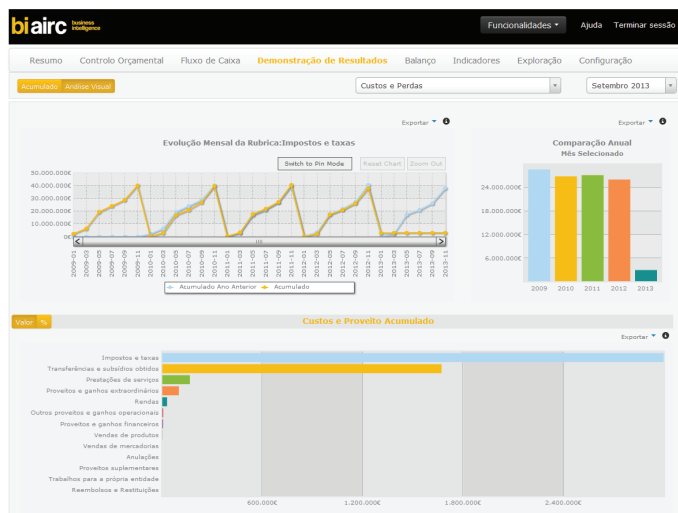
- Open & Flexible Platform
- Reduced Implementing Time
- Improved mechanisms for financial monitoring

**INNOVATION**

- Many contributors
- High-quality technology
- Vibrant community
- Regular upgrades
- Integration with some of the best technologies

**SAVE MONEY**

- Reduced Costs
- Faster Development & Deployment
- Reduced Total Cost of Ownership (TCO)



## ABOUT XPAND IT

Xpand IT is a global company specialized in strategic planning, consulting, implementation and maintenance of enterprise software, fully adapted to the customers needs. Our portfolio includes services and products in Business Intelligence, Big Data, BPM & Enterprise Middleware, Enterprise Mobility and Collaborative Platforms. Xpand IT stands out for its innovative approach fully supported by tools, processes and agile methodologies, fully mapped with CMMI. With customers all over the world, Xpand IT is recognized by its technical knowledge and "Passion for Excellence".

### XPAND IT LISBON OFFICE

Parque das Nações  
Avenida D. João II Lote 1.13.01 - F, 3º Piso  
1990-078 Lisboa - Portugal

### XPAGILE SDC

Rua Camilo Castelo Branco, nº 643, R/C Esq.  
4900-437 Viana do Castelo - Portugal

### CONTACTS

mail@xpand-it.com  
T: +351 218967150  
F: +351 218967151